

- LEGEND:**
- WATER QUALITY MONITORING STATIONS
- COOLING WATER INTAKES**
- 01 HONG KONG CONVENTION AND EXHIBITION CENTRE EXTENSION
 - 02 TELECOM HONG KONG ACADEMY 101 PERFORMING ARTS / SAITLWAY CENTRE
 - 03 HONG KONG CONVENTION AND EXHIBITION CENTRE PHASE 1
 - 04 WAN CHAI TOWER AND GREAT WALL CENTRE
 - 05 SUN HANG KAI CENTRE
 - 06 PROPOSED EXHIBITION STATION / WORLD TRADE CENTRE
 - 07 WINDSOR HOUSE
 - 08 CITY GREEN
 - 09 PROVIDENT CENTRE
 - 102 PROPOSED HERPA EXTENSION
 - 103 SUN HANG KAI CENTRE / REPRODUCTION
 - 107 WINDSOR HOUSE / TEMPORARY REPRODUCTION
- WSD SALT WATER INTAKE**
- #201 WAN CHAI
 - #401 WAN CHAI (REPRODUCTION)
 - #501 CEMETERY BAY
 - #601 SA. BAY
 - #620 CHA KAO LINC
 - #6210 SA. BAY (2)
 - #6211 CLARRY BAY
 - #6219 SHILOE BAY
 - #6220 KENNEDY TOWN

| DESIGNATED PROJECT'S TOP | WORK CONTRACT | DESIGNATED PROJECT NUMBER | COMPLETION (APPROXIMATE) |
|---|------------------------------|---------------------------|--------------------------|
| SP1 - CENTRAL WAN CHAI STYASS WORKS INCLUDING 15 ROAD TUNNEL AND SLOPE ROADS | CEOD CONTRACT NO. HL/2009/01 | SP1 - SP3 - SP6 | APRIL 2010 |
| SP2 - ROAD P2 AND OTHER ROADS (PRIMARY & DISTRICT DISTRIBUTION ROADS) | CEOD CONTRACT NO. HL/2009/02 | SP1 - SP3 - SP5 | APRIL 2010 |
| SP3 - PERMANENT AND TEMPORARY ROADWAY WORKS INCLUDING ASSOCIATED DRAINAGE WORKS IN WAN CHAI DEVELOPMENT PHASE 1T / WSD11 AREA | CEOD CONTRACT 3 | SP1 - SP3 | END 2011 |
| SP4 - TEMPORARY BRIDGE-SHELTER 1 (SP4 NOT TO BE IMPLEMENTED) | CEOD CONTRACT 4 | SP1 - SP3 | END 2011 |
| SP5 - WAN CHAI EAST SEWAGE DUTYALL | CEOD CONTRACT 5 | SP3 | 2010 |
| SP6 - DISCREET FOR THE CROSS-HARBOUR WATER MAINS | HYD CONTRACT NO. HY/2009/11 | SP3 | 18 AUGUST 2009 |
| | HYD CONTRACT NO. HY/2009/15 | SP1 - SP3 | SEPTEMBER 2010 |
| | HYD CONTRACT NO. HY/2009/16 | SP1 | OCTOBER 2010 |
| | HYD CONTRACT NO. HY/2009/18 | SP1 | NOVEMBER 2010 |
| | HYD CONTRACT 12 | SP1 - SP3 | MID 2010 |



CEOD 土木工程發展局
Civil Engineering and Development Department

WAN CHAI DEVELOPMENT PHASE II

WAN CHAI DEVELOPMENT PHASE II, P&I CENTRE - WAN CHAI STYASS - CROSS HARBOUR WATER MAINS AND TUNNEL WORKS (STAGE 1)

LOCATIONS OF WATER QUALITY MONITORING STATIONS

AECOM

PROJECT NUMBER: **60041297/C5/SK001**

| | | | |
|----------------------|----------------------|----------------------|----------------------|
| DATE: 2010 | SCALE: 1:10000 | DATE: 2010 | SCALE: 1:10000 |
| BY: [Signature] | BY: [Signature] | BY: [Signature] | BY: [Signature] |
| CHECKED: [Signature] | CHECKED: [Signature] | CHECKED: [Signature] | CHECKED: [Signature] |

© COPYRIGHT RESERVED



NOTES:

1. SETTING OUT COORDINATES REFER DRG. No. 60095653/NP/1601.
2. THE CONTRACTOR SHALL KEEP OPEN AND PROVIDE ACCESS (PEDESTRIAN AND TRAFFIC) TO THE PUBLIC AT ALL TIMES DURING THE PERIOD OF THE CONTRACTOR'S OCCUPATION OF OIL STREET. THE CONTRACTOR SHALL MAINTAIN THIS PORTION OF SITE IN A CLEAN, PASSABLE AND SAFE STATE AT ALL TIMES.
3. THIS DRAWING SHALL BE READ IN CONJUNCTION WITH DRG. No. 60095653/NP/1652.

LEGEND:

| | | | |
|--------------------|----------------|-----------------------|----------------|
| [Dotted pattern] | PORTION NPR1 | [Cross-hatch pattern] | PORTION NPR4 |
| [Diagonal lines /] | PORTION NPR2 | [Diagonal lines \] | PORTION NPR5 |
| [Diagonal lines /] | PORTION NPR3 | [Diagonal lines \] | PORTION NPR6 |
| [Diagonal lines /] | PORTION NPR4 | [Diagonal lines \] | PORTION NPR7 |
| [Dotted pattern] | PORTION NPR8 | [Dotted pattern] | PORTION NPR9 |
| [Dotted pattern] | PORTION NPR10 | [Dotted pattern] | PORTION NPR11 |
| [Dotted pattern] | PORTION NPR12 | [Dotted pattern] | PORTION NPR13 |
| [Dotted pattern] | PORTION NPR14 | [Dotted pattern] | PORTION NPR15 |
| [Dotted pattern] | PORTION NPR16 | [Dotted pattern] | PORTION NPR17 |
| [Dotted pattern] | PORTION NPR18 | [Dotted pattern] | PORTION NPR19 |
| [Dotted pattern] | PORTION NPR20 | [Dotted pattern] | PORTION NPR21 |
| [Dotted pattern] | PORTION NPR22 | [Dotted pattern] | PORTION NPR23 |
| [Dotted pattern] | PORTION NPR24 | [Dotted pattern] | PORTION NPR25 |
| [Dotted pattern] | PORTION NPR26 | [Dotted pattern] | PORTION NPR27 |
| [Dotted pattern] | PORTION NPR28 | [Dotted pattern] | PORTION NPR29 |
| [Dotted pattern] | PORTION NPR30 | [Dotted pattern] | PORTION NPR31 |
| [Dotted pattern] | PORTION NPR32 | [Dotted pattern] | PORTION NPR33 |
| [Dotted pattern] | PORTION NPR34 | [Dotted pattern] | PORTION NPR35 |
| [Dotted pattern] | PORTION NPR36 | [Dotted pattern] | PORTION NPR37 |
| [Dotted pattern] | PORTION NPR38 | [Dotted pattern] | PORTION NPR39 |
| [Dotted pattern] | PORTION NPR40 | [Dotted pattern] | PORTION NPR41 |
| [Dotted pattern] | PORTION NPR42 | [Dotted pattern] | PORTION NPR43 |
| [Dotted pattern] | PORTION NPR44 | [Dotted pattern] | PORTION NPR45 |
| [Dotted pattern] | PORTION NPR46 | [Dotted pattern] | PORTION NPR47 |
| [Dotted pattern] | PORTION NPR48 | [Dotted pattern] | PORTION NPR49 |
| [Dotted pattern] | PORTION NPR50 | [Dotted pattern] | PORTION NPR51 |
| [Dotted pattern] | PORTION NPR52 | [Dotted pattern] | PORTION NPR53 |
| [Dotted pattern] | PORTION NPR54 | [Dotted pattern] | PORTION NPR55 |
| [Dotted pattern] | PORTION NPR56 | [Dotted pattern] | PORTION NPR57 |
| [Dotted pattern] | PORTION NPR58 | [Dotted pattern] | PORTION NPR59 |
| [Dotted pattern] | PORTION NPR60 | [Dotted pattern] | PORTION NPR61 |
| [Dotted pattern] | PORTION NPR62 | [Dotted pattern] | PORTION NPR63 |
| [Dotted pattern] | PORTION NPR64 | [Dotted pattern] | PORTION NPR65 |
| [Dotted pattern] | PORTION NPR66 | [Dotted pattern] | PORTION NPR67 |
| [Dotted pattern] | PORTION NPR68 | [Dotted pattern] | PORTION NPR69 |
| [Dotted pattern] | PORTION NPR70 | [Dotted pattern] | PORTION NPR71 |
| [Dotted pattern] | PORTION NPR72 | [Dotted pattern] | PORTION NPR73 |
| [Dotted pattern] | PORTION NPR74 | [Dotted pattern] | PORTION NPR75 |
| [Dotted pattern] | PORTION NPR76 | [Dotted pattern] | PORTION NPR77 |
| [Dotted pattern] | PORTION NPR78 | [Dotted pattern] | PORTION NPR79 |
| [Dotted pattern] | PORTION NPR80 | [Dotted pattern] | PORTION NPR81 |
| [Dotted pattern] | PORTION NPR82 | [Dotted pattern] | PORTION NPR83 |
| [Dotted pattern] | PORTION NPR84 | [Dotted pattern] | PORTION NPR85 |
| [Dotted pattern] | PORTION NPR86 | [Dotted pattern] | PORTION NPR87 |
| [Dotted pattern] | PORTION NPR88 | [Dotted pattern] | PORTION NPR89 |
| [Dotted pattern] | PORTION NPR90 | [Dotted pattern] | PORTION NPR91 |
| [Dotted pattern] | PORTION NPR92 | [Dotted pattern] | PORTION NPR93 |
| [Dotted pattern] | PORTION NPR94 | [Dotted pattern] | PORTION NPR95 |
| [Dotted pattern] | PORTION NPR96 | [Dotted pattern] | PORTION NPR97 |
| [Dotted pattern] | PORTION NPR98 | [Dotted pattern] | PORTION NPR99 |
| [Dotted pattern] | PORTION NPR100 | [Dotted pattern] | PORTION NPR101 |

| | | |
|---|-----------------------|----------|
| B | WORKING DRAWING | 11/09/09 |
| A | TENDER ADDENDUM NO. 1 | 11/09/09 |
| - | TENDER DRAWING | 09/09/09 |

Highways Department 路政署
Major Works Project Management Office

CENTRAL - WAN CHAI BYPASS AND IEC LINK
CENTRAL - WAN CHAI BYPASS - NORTH POINT RECLAMATION

PORTION OF SITE
SHEET 1 OF 2

AECOM

| | |
|-------------|-------------------|
| DRGNO. | 60095653/NP/1651B |
| DESIGNED BY | TTF |
| CHECKED BY | CJH |
| DATE | 11/09/09 |
| SCALE | AS SHOWN |
| UNIT | METRES |

WORKING DRAWING
COPYRIGHT RESERVED



INSET 'A'
SCALE 1:1000

CENTRAL DISTRICT



EIA-141/2007
DP3

HKCEC (Western Part)

HKCEC (Middle Part)

HKCEC (Eastern Part)

| IMP | COORDINATES | |
|-------|-------------|------------|
| | EASTING | NORTHING |
| 041 | 85996.526 | 818105.708 |
| 042 | 85997.417 | 818104.468 |
| 043 | 85982.943 | 818079.206 |
| 044 | 85982.543 | 818086.581 |
| 045 | 85984.818 | 818085.259 |
| 046 | 85985.204 | 818085.814 |
| 046 | 85975.757 | 818081.208 |
| 047 | 85974.956 | 818082.441 |
| 048 | 85980.846 | 818075.887 |
| 049 | 85981.347 | 818073.258 |
| 050 | 85976.209 | 818066.814 |
| 051 | 85984.478 | 818080.846 |
| 052 | 85975.226 | 818089.204 |
| 053 | 85973.504 | 818077.897 |
| 054 | 85983.627 | 818084.764 |
| 055 | 85983.745 | 818079.883 |
| 056 | 85989.071 | 818078.764 |
| 056-1 | 85985.679 | 818078.873 |
| 056-2 | 85982.468 | 818078.765 |
| 056-3 | 85987.248 | 818182.758 |
| 057 | 85989.463 | 818181.878 |
| 058 | 85978.496 | 818087.198 |
| 058 | 85978.374 | 818083.818 |
| 060 | 85978.387 | 818120.164 |
| 061 | 85980.881 | 818184.524 |
| 062 | 85982.434 | 818171.812 |
| 063 | 85983.384 | 818280.788 |
| 064 | 85983.818 | 818276.307 |

| IMP | COORDINATES | |
|-------|-------------|------------|
| | EASTING | NORTHING |
| 065 | 85988.903 | 818415.438 |
| 066 | 85983.000 | 818415.614 |
| 067 | 85982.816 | 818415.240 |
| 068 | 85989.515 | 818415.882 |
| 069 | 85982.110 | 818414.000 |
| 070 | 85987.289 | 818417.880 |
| 071 | 85991.850 | 818419.270 |
| 072 | 85994.415 | 818407.187 |
| 072-1 | 85955.589 | 818106.587 |
| 073 | 85987.435 | 818385.890 |
| 074 | 85989.797 | 818374.107 |
| 075 | 85981.935 | 818383.148 |
| 076 | 85988.298 | 818388.000 |
| 077 | 85989.906 | 818382.898 |
| 078 | 85988.439 | 818374.038 |
| 079 | 85992.430 | 818351.015 |
| 080 | 85984.635 | 818328.880 |
| 081 | 85983.417 | 818308.182 |
| 082 | 85985.882 | 818376.148 |
| 083 | 85987.025 | 818356.084 |
| 084 | 85986.473 | 818352.444 |
| 085 | 85982.342 | 818348.713 |
| 086 | 85984.499 | 818348.925 |
| 087 | 85984.196 | 818345.388 |
| 088 | 85982.512 | 818346.142 |
| 089 | 85989.981 | 818425.898 |
| 090 | 85987.830 | 818437.198 |

CUT LINE B-B
SEE AT DRAWING NO. A00025/C1/100/1006



KEY PLAN
SCALE 1:10000

NOTE:
1. FOR NOTES & LEGEND, REFER TO DRAWING NO. A00025/C1/100/1006.

| IMP | COORDINATES | |
|-------|-------------|------------|
| | EASTING | NORTHING |
| 01 | 859875.205 | 818222.559 |
| 02 | 85975.271 | 818082.299 |
| 03 | 85944.361 | 818084.825 |
| 04 | 85941.020 | 818081.014 |
| 05 | 85982.492 | 818029.522 |
| 06 | 85983.584 | 818081.612 |
| 07 | 85986.585 | 818081.197 |
| 08 | 85989.199 | 818081.147 |
| 09 | 85988.433 | 818082.241 |
| 090 | 85981.082 | 818081.080 |
| 091 | 85985.389 | 818088.075 |
| 092 | 85987.486 | 818088.027 |
| 093 | 85985.468 | 818084.817 |
| 094 | 85986.433 | 818081.122 |
| 095 | 859874.289 | 818084.500 |
| 096 | 85985.195 | 818085.525 |
| 097 | 85989.198 | 818084.441 |
| 098 | 85986.085 | 818088.816 |
| 099 | 85981.421 | 818080.587 |
| 100 | 85982.537 | 818120.881 |
| 101 | 859815.285 | 818121.484 |
| 102 | 859813.182 | 818084.245 |
| 103 | 859827.086 | 818088.074 |
| 104 | 85978.984 | 818083.670 |
| 105 | 859815.280 | 818080.261 |
| 106 | 859801.667 | 818082.286 |
| 107 | 85984.025 | 818083.896 |
| 108 | 85986.218 | 818084.245 |
| 109 | 85981.225 | 818080.180 |
| 110 | 85983.781 | 818088.687 |
| 111 | 85983.216 | 818088.470 |
| 112 | 859824.142 | 818082.117 |
| 113-1 | 859821.081 | 818084.582 |
| 113-2 | 859828.299 | 818084.709 |
| 114 | 859827.428 | 818084.286 |
| 115 | 859808.187 | 818084.280 |
| 116-1 | 859824.812 | 818088.089 |
| 116-2 | 859824.747 | 818082.285 |
| 117 | 85988.850 | 818081.194 |
| 118 | 859818.190 | 818088.037 |
| 119 | 859828.810 | 818087.295 |
| 120 | 859818.906 | 818088.080 |
| 121 | 859825.682 | 818081.512 |

| | | |
|----|----------------------|-----------------|
| C | TENDER ADDENDUM NO.4 | SHEN JYL SEP 08 |
| B | TENDER ADDENDUM NO.2 | SHEN JYL SEP 08 |
| A | TENDER ADDENDUM NO.1 | SHEN JYL SEP 08 |
| - | TENDER DRAWING | SHEN JYL AUG 08 |
| 01 | SCHEMATIC | SHEN JYL SEP 08 |


土木工程發展署
 Civil Engineering and Development Department
WAN CHAI DEVELOPMENT PHASE II
 WAN CHAI DEVELOPMENT PHASE II -
 CENTRAL AND WEST DISTRICTS
 HONG KONG CONVENTION AND EXHIBITION CENTRE
SITE BOUNDARY SETTING OUT PLAN
 (Contract no. HK/2009/01)

AECOM
 DRGNO. 60041297/C1/100/1006C
 SHEET NO. 01 OF 01
 DATE: 08/2009
 DRAWN BY: JYL
 CHECKED BY: JYL
 APPROVED BY: JYL
 SCALE: AS SHOWN
 COPYRIGHT RESERVED

港口
HARBOUR



LEGEND:



WORKS AREA



DREDGING AREA FOR
MITIGATION OF ODOUR(DP3)



SITE BOUNDARY



中國建築工程(香港)有限公司
CHINA STATE CONSTRUCTION ENG. (HONG KONG) LTD.

Highways Department
CONTRACT NO. HY/2009/15
CENTRAL-WAN CHAI BYPASS - TUNNEL
(CAUSEWAY BAY TYphoon
SHELTER SECTION)

TITLE
LOCATION PLAN OF WORKS AREA

DRG. NO.
CWBT/EPD/001B

SCALE
1:1000 @ A0
DATE
MAY 2010 08 11
SHEET NO.
COPYRIGHT RESERVED

維多利亞公園
Victoria Park

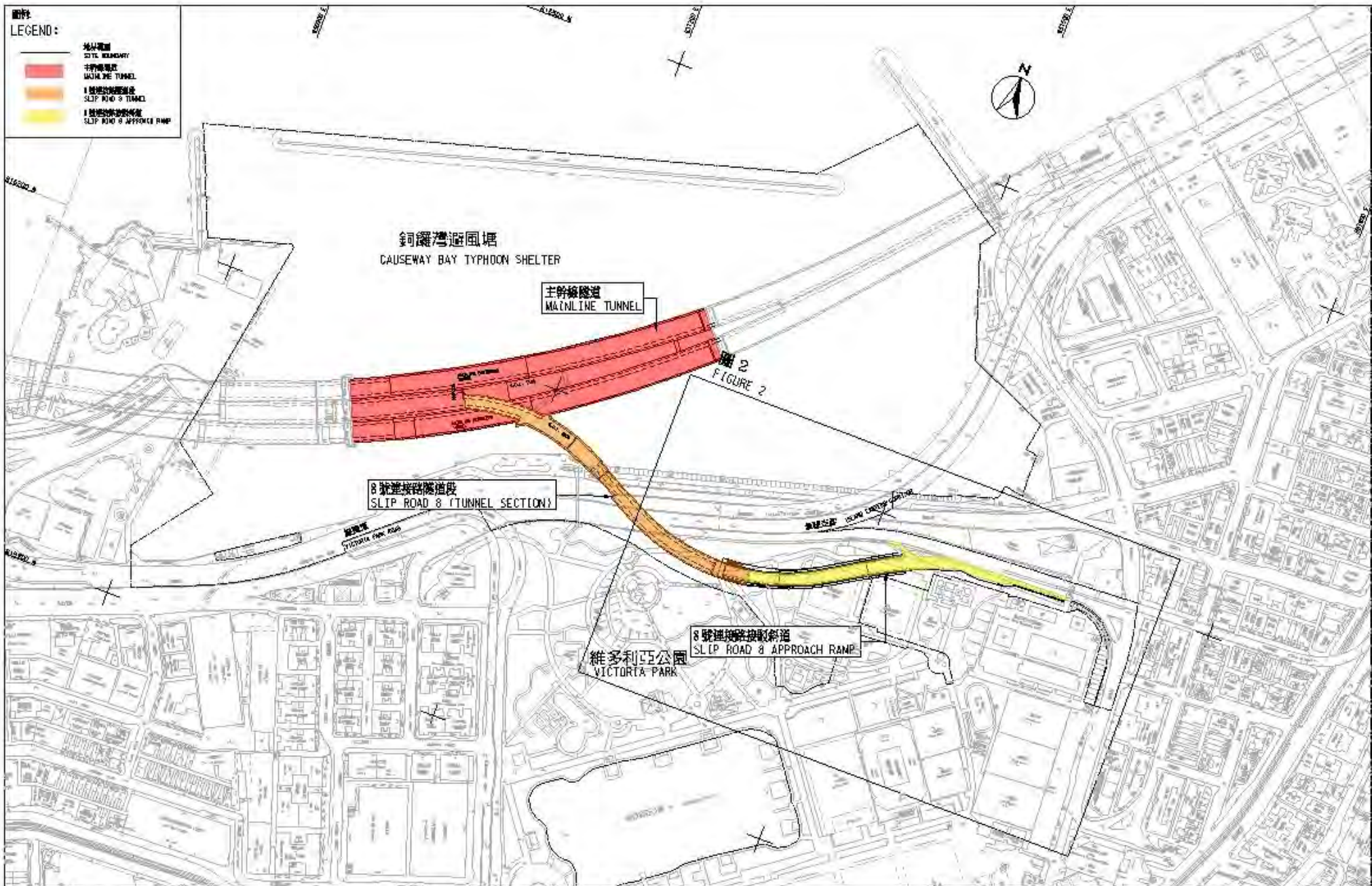


圖1- 合約編號 HY/2010/08 中環灣仔繞道-8號連接路段隧道

FIGURE 1 - CONTRACT NO. HY/2010/08 - CENTRAL - WAN CHAI BYPASS - TUNNEL (SLIP ROAD 8 SECTION)

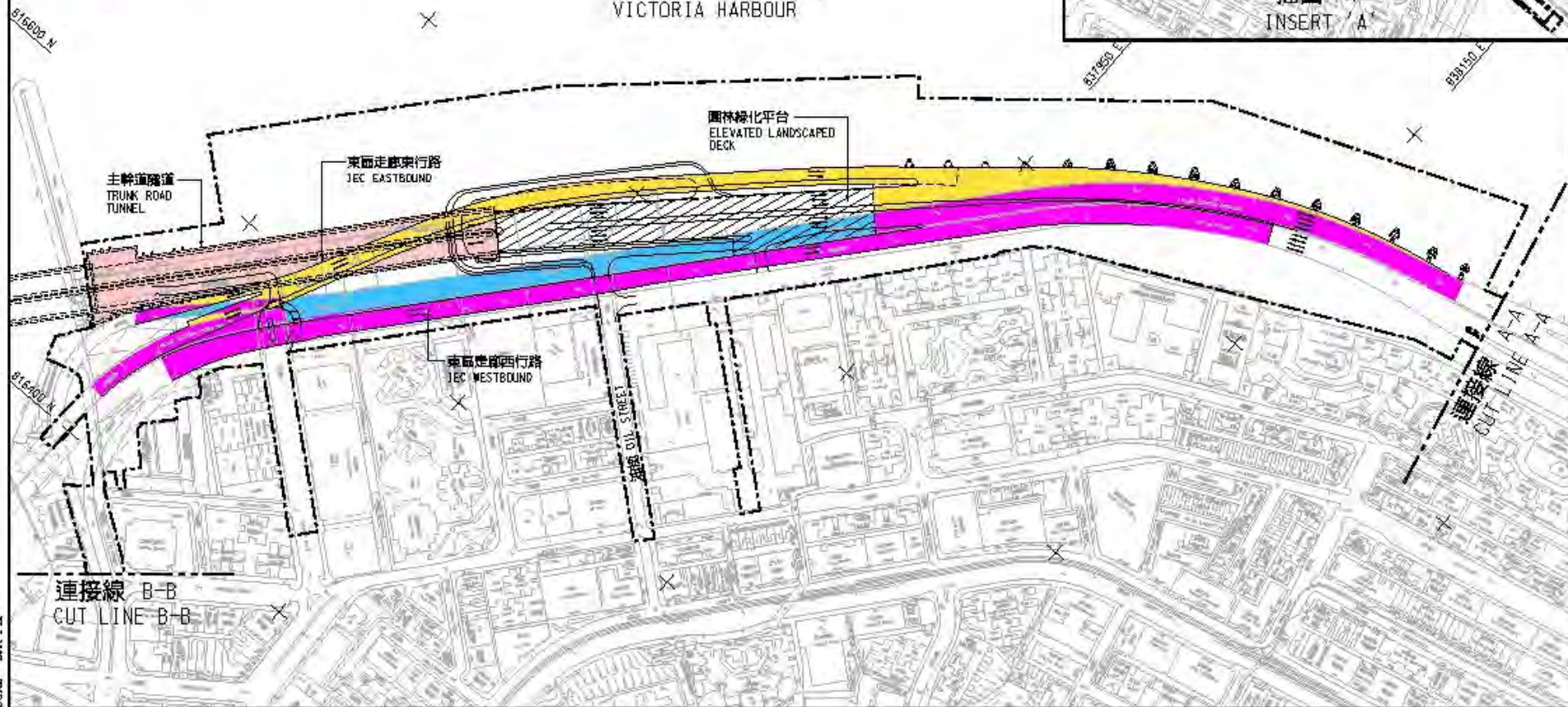
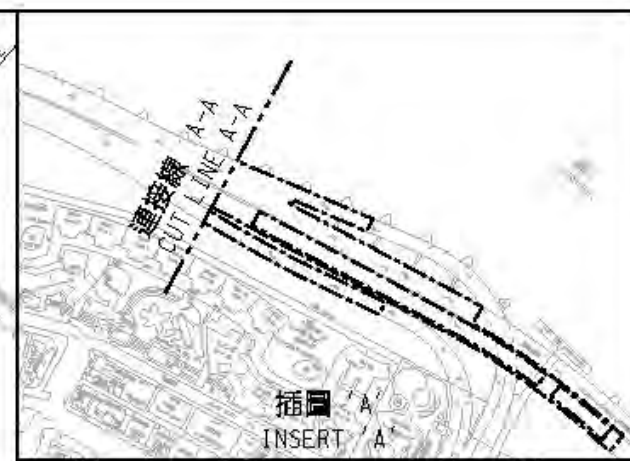
SCALE 1 : 3000

圖例：
LEGEND:

-  地界範圍
SITE BOUNDARY
-  園林綠化平台
LANDSCAPED DECK
-  主幹道隧道
TRUNK ROAD TUNNEL
-  擬議高架道路
PROPOSED ELEVATED CARRIAGEWAY
-  現有高架行車道將予拆卸
EXISTING ELEVATED CARRIAGEWAY TO BE DEMOLISHED
-  現有高架行車道將予拆卸及重建
EXISTING ELEVATED CARRIAGEWAY TO BE DEMOLISHED AND RECONSTRUCTED



維多利亞海港
VICTORIA HARBOUR



合約編號 HY/2009/19 - 中環灣仔繞道 - 北角段隧道及東區走廊連接路

CONTRACT NO. HY/2009/19 - CENTRAL-WAN CHAI BYPASS - TUNNEL (NORTH POINT SECTION) AND ISLAND EASTERN CORRIDOR LINK

SCALE 1 : 3000